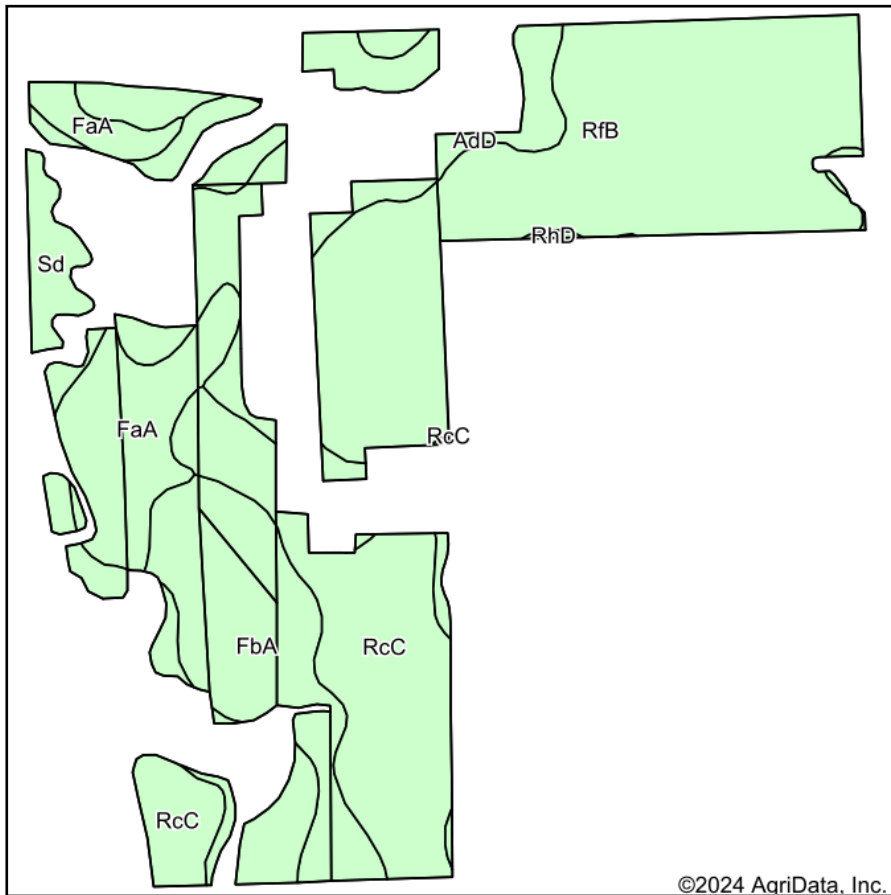
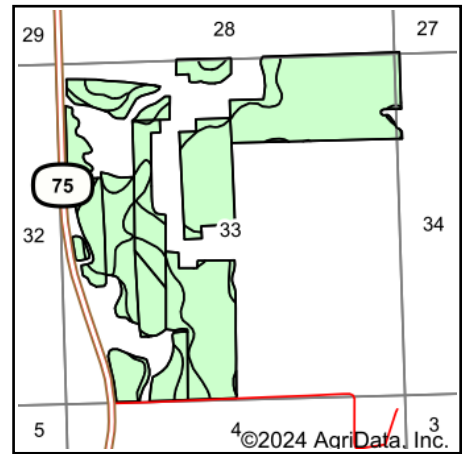


Soils Map



Soils data provided by USDA and NRCS.



State: **South Dakota**
 County: **Perkins**
 Location: **33-23N-12E**
 Township: **Grand River**
 Acres: **259.71**
 Date: **3/12/2024**

Maps Provided By:

 CUSTOMIZED ONLINE MAPPING
 © AgriData, Inc. 2023 www.AgriDataInc.com



Area Symbol: SD105, Soil Area Version: 23

Code	Soil Description	Acres	Percent of field	Non-Irr Class *c	Range Production (lbs/acre/yr)	Productivity Index
RfB	Regent-Wyola silty clay loams, 3 to 6 percent slopes	94.27	36.3%	Ile	2140	79
RcC	Reeder-Lantry loams, 2 to 9 percent slopes	49.29	19.0%	Ile	2152	66
FbA	Farnuf-Daglum loams, 0 to 2 percent slopes	33.89	13.0%	IIc	2106	70
AdD	Amor-Cabba loams, 9 to 15 percent slopes	29.51	11.4%	IVe	2050	40
FaA	Farnuf loam, 0 to 2 percent slopes	26.47	10.2%	IIc	2391	84
Sd	Shambo loam, channeled	25.51	9.8%	VIw	3024	32
RhD	Regent-Wayden silty clay loams, 6 to 15 percent slopes	0.77	0.3%	IIIe	1840	39
Weighted Average				2.62	2239.1	66.7

*c: Using Capabilities Class Dominant Condition Aggregation Method

Soils data provided by USDA and NRCS.