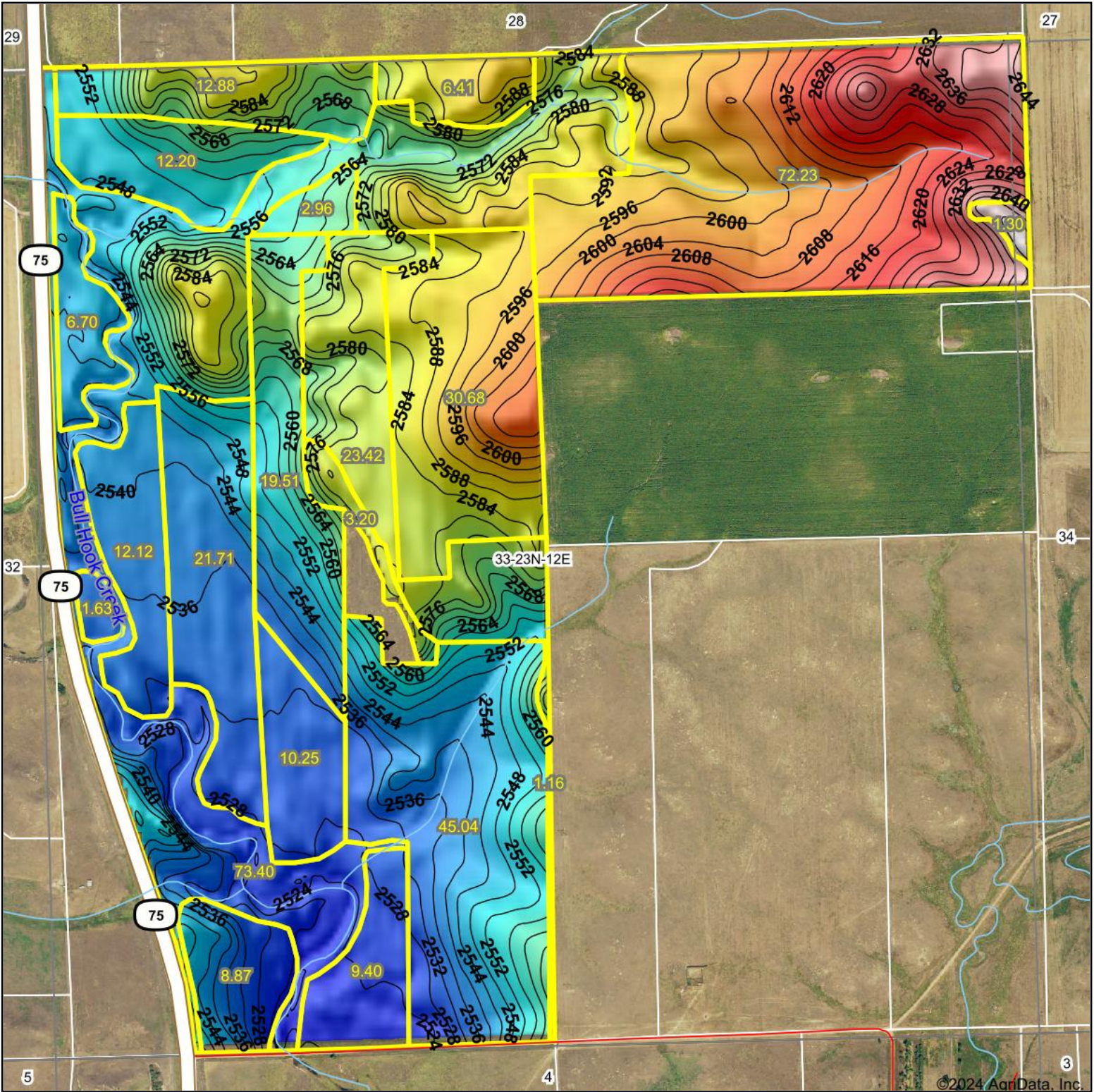

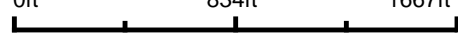



Topography Hillshade



<p>Low Elevation High</p> 	<p>Source: USGS 10 meter dem Interval(ft): 4 Min: 2,519.0 Max: 2,654.9 Range: 135.9 Average: 2,566.8 Standard Deviation: 30.97 ft</p>	<p>0ft 834ft 1667ft</p>  <p>  3/12/2024 33-23N-12E Perkins County South Dakota Boundary Center: 45° 54' 50.2, -102° 38' 31.16 </p>
--	---	--